

NSF STEM Forum | November 9, 2015 | Washington, DC

#NSFNextGenSTEM

Assistive Technologies for Learning: Broadening Participation in STEM

CHAIR:

Rebecca Griffiths, SRI

NSF

REPRESENTATIVE:

Rebecca Kruse

PRESENTERS:

Ethan Danahy, Tufts University

Jenna Gorlewicz, Saint Louis University

Richard Ladner, University of

Washington

Donna Lange, Rochester Institute
of Technology

Kathy Perkins, University of
Colorado Boulder

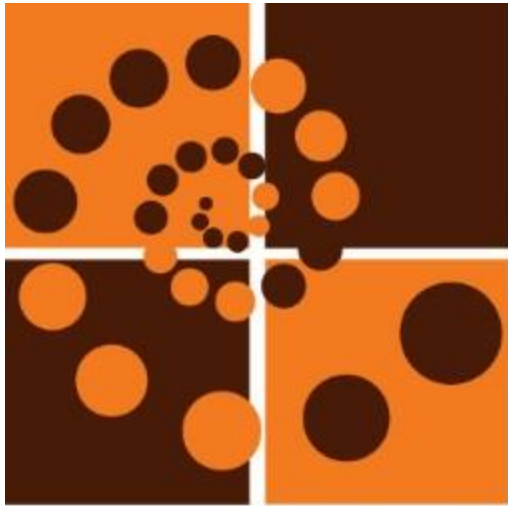


This event is funded by the National Science Foundation, grant #1312022. Any opinions, findings, and conclusions or recommendations expressed at this event or in these materials are those of the author(s) and do not necessarily reflect the views of the National Science Foundation

“We just hired a deaf engineer and no one told me.”

Human Resource Director





DeafTEC

Technological Education Center for
Deaf and Hard-of-Hearing Students

www.deaftec.org



DeafTEC is supported by the National Science Foundation under award numbers DUE 1104229 & 1501756.

Greater Access to STEM Education



- Improve access to learning
 - Access technologies
 - Instructional strategies
- Improve self-efficacy

Classroom Access



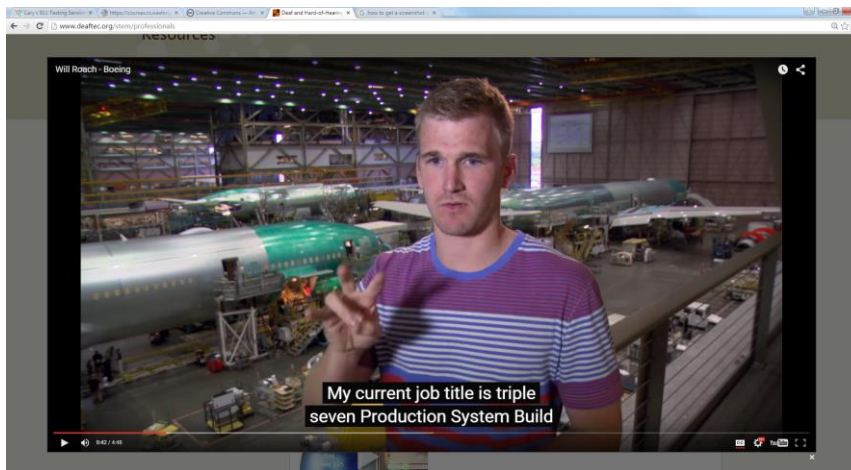
Interpreting



Real Time Captioning



Amplification



Video Captioning

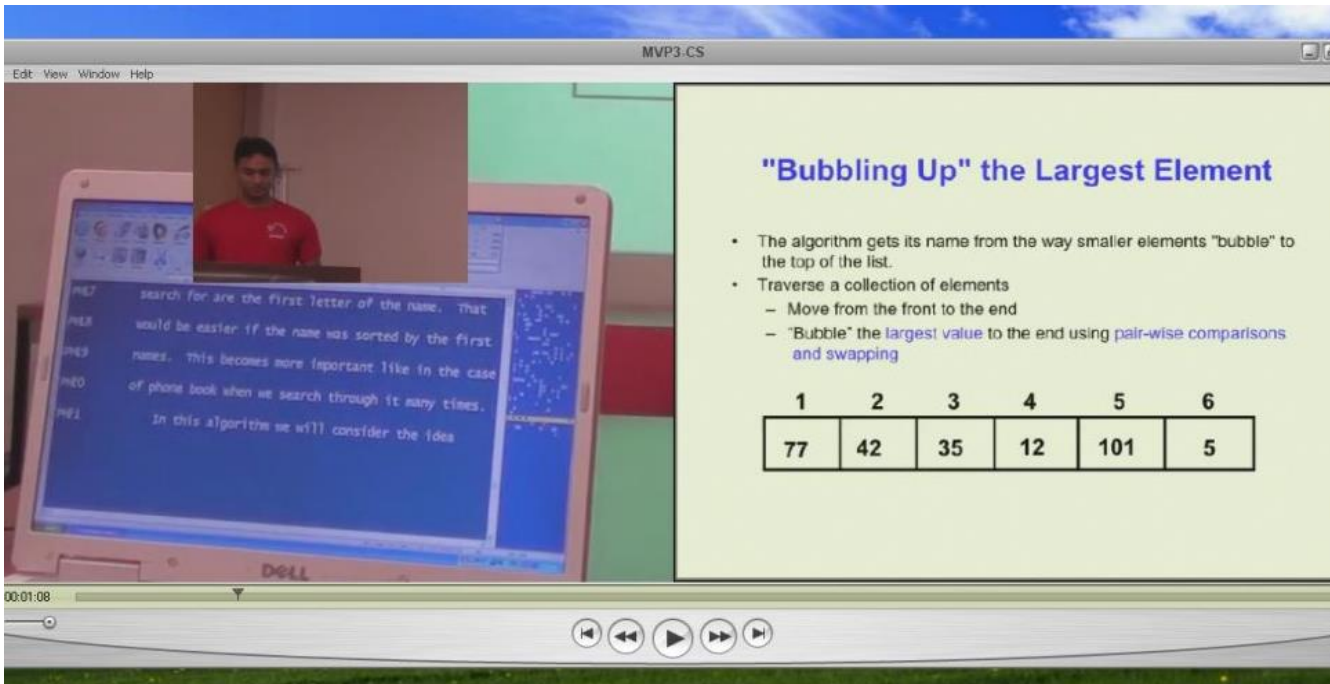


Document Visualizer

Research in Access Technology



See-Through
Monitor



Multiple View
Perspectives

Instructional Strategies

- Universal Design for Instruction (UDI)
- Micromessaging



Self-Efficacy



I can do it!